



MODA

DELIVERING RESILIENCE

Sustainability Report | 2021

Table of Contents

3 INTRODUCTION

Message from Our CEO & Co-Founder

4 OUR COMPANY

8 OUR SUSTAINABILITY STRATEGY

12 GOVERNANCE

Corporate Governance

Competitive Behavior & Business Ethics

Risk Management

Data Security

18 ENVIRONMENTAL

Greenhouse Gas Emissions

Air Quality

Ecological Impacts

Critical Incident Risk Management

28 SOCIAL

Workforce Health & Safety

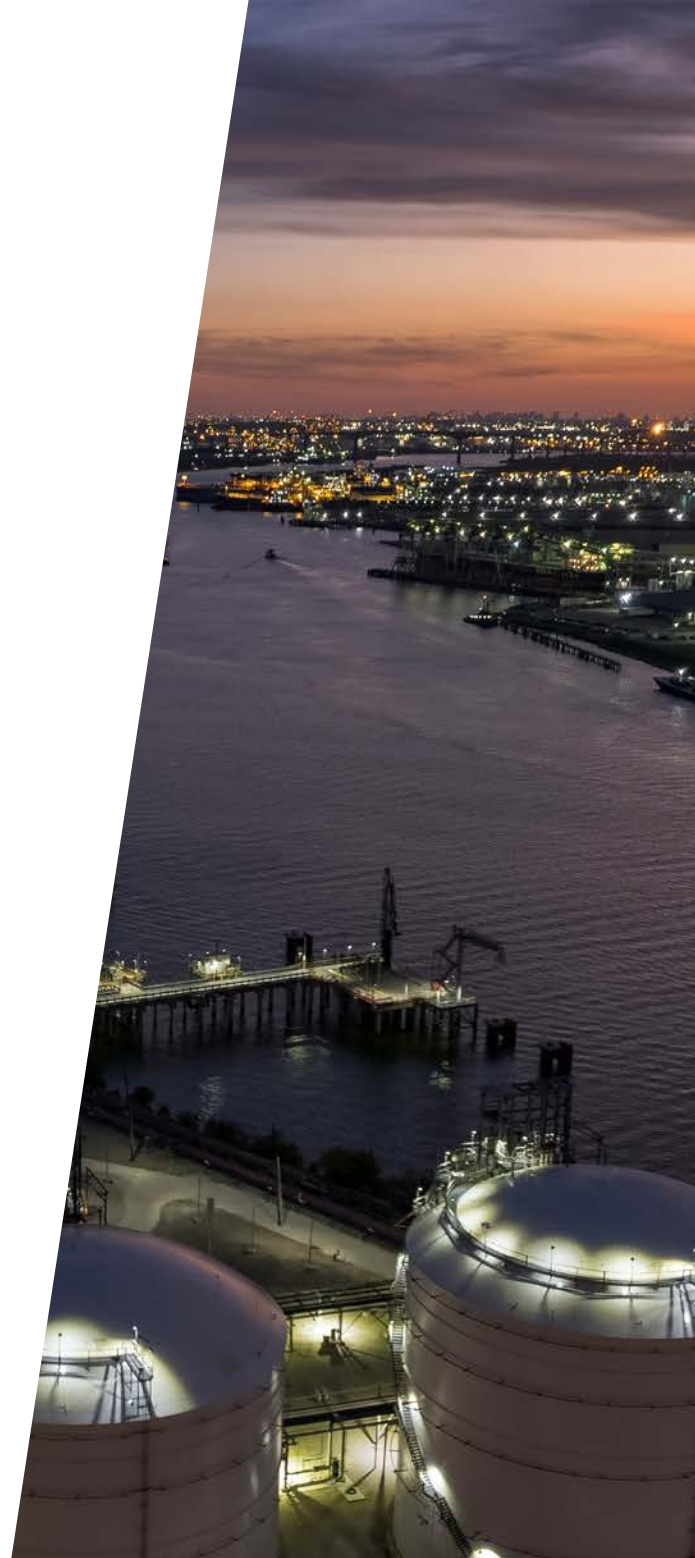
Employee Engagement, Diversity & Inclusion

Community Engagement

38 ABOUT THIS REPORT

38 FORWARD-LOOKING STATEMENTS

39 SASB INDEX



INTRODUCTION

Message from Our CEO & Co-Founder



At Moda Midstream, LLC ("Moda"), we develop and operate advantaged, sophisticated infrastructure that helps our customers grow. Our development-oriented mindset allows us – from the very beginning – to build sustainable practices into our assets and operations.

As we continue to execute our ambitious vision for Moda, we will look back on 2021 as a transformational year for us. During 2021, the Company sold the Moda Ingleside Energy Center (MIEC) and other critical energy supply chain infrastructure to Enbridge Inc. (Enbridge), one of the largest infrastructure companies in our industry. MIEC had its origins as Naval Station Ingleside and was shut down as part of the 2005 Base Realignment and Closure Commission process. Moda transformed the former U.S. Navy base into the premier facility for energy exports. Along the way, Moda created high-paying jobs and made significant investments in the community. Our stewardship of MIEC was recognized by our stakeholders and neighbors. And, in its announcement of the acquisition, Enbridge highlighted that MIEC was "state-of-the art" infrastructure, had "been constructed to industry-leading environmental standards designed to minimize its carbon footprint" and possessed a "best-in-class environmental, social and governance ("ESG") profile."

In addition, Moda also commissioned a new terminal, Vopak Moda Houston in 2021. We are proud to bring the first greenfield terminal in the Port of Houston in over a decade. The terminal was built with the latest safety technologies and designed for resilience. The Vopak Moda Houston joint venture (VMH) brings together Moda's development expertise and market knowledge with Royal Vopak's more than 400 years of history to create a flagship marine terminal.

Our success at MIEC and VMH was in spite of many obstacles, including the COVID pandemic, supply chain disruptions and other weather and logistical challenges in the area. Through it all, our dedicated team persevered and remained focused on demonstrating our sustainable purpose and creating value for our stakeholders.

In the coming years, the twin motivations of energy security and the energy transition will drive demand for storage and handling of lower-carbon products. We are prepared to execute our strategy and help our customers handle new products

and access new markets. Our track record and history – including the VMH commissioning and MIEC sale – undoubtedly demonstrate that sustainable practices benefit Moda, our customers and our stakeholders. As we strive to provide superior logistics solutions, our dedication to sustainability has never been stronger.

Following the most transformational period in our Company's history, we are furthering our ESG journey as we capitalize on new opportunities in the evolving energy landscape. With our focus on innovative solutions, empowering our people and protecting the environment and our deep expertise and history of operational excellence, we are well-positioned to **Deliver Resilience.**

We are proud to present our 2021 Sustainability Report. Within this report, we further discuss our commitments and progress to address the ESG issues most important to our business and our sustainable purpose. We look forward to continuing to share our progress in the coming years.



Jonathan Z. Ackerman
Chief Executive Officer
& Co-Founder

INTRODUCTION

OUR COMPANY

OUR SUSTAINABILITY STRATEGY

GOVERNANCE

ENVIRONMENTAL

SOCIAL

ABOUT THIS REPORT

FORWARD-LOOKING STATEMENTS

SASB INDEX



OUR COMPANY

Moda develops advantaged, sophisticated infrastructure for storing and handling liquids products that are essential to our economy and our way of life. Moda is a trusted, innovative partner dedicated to safely, reliably and efficiently moving bulk liquids products from origin to destination.

Since our inception in 2015, our aim has been to deliver premium services to our customers and protect the integrity of their liquids supply chain while generating attractive returns for our investors in a sustainable and responsible manner. Our investment criteria are underpinned by our operational capabilities, commercial fundamentals and sustainable business practices. We strongly believe that adhering to rigorous underwriting standards rooted in these attributes results in optimal investment decisions and the development of resilient infrastructure.

We own and operate terminaling, pipeline and storage assets located along the United States Gulf Coast where our infrastructure plays a vital role in **balancing global supply and demand** for sources of energy and industrial feedstocks.

INTRODUCTION

OUR COMPANY

OUR SUSTAINABILITY
STRATEGY

GOVERNANCE

ENVIRONMENTAL

SOCIAL

ABOUT THIS
REPORT

FORWARD-LOOKING
STATEMENTS

SASB INDEX

Our Operations

Over the company's history, we have owned, operated and developed some of the most important infrastructure assets for handling liquids in our industry. These notable assets include:

- North America's leading crude export facility
- A joint ownership interest in the Port of Houston's first greenfield marine terminal developed in over a decade
- A minority interest in a long-haul Permian pipeline with direct connectivity to our downstream assets
- A development project in the St. James, Louisiana region



Spotlight: Our Most Transformational Year: Developing Valuable Solutions, While Making a Sustainable Difference

Moda Ingleside Energy Center



MODA

"MIEC is a flagship asset. We are very proud of the **safe and responsible growth** we have achieved since we purchased the asset just a few years ago. The site was originally designed by the U.S. Navy to support a carrier battle group and, despite the uncertainty to the local residents and community following its closure, has developed into the **nation's largest exporter of crude oil, creating jobs and economic prosperity for the Coastal Bend.**"

- **Jonathan Ackerman**
Moda Midstream CEO & Co-Founder

Moda's success has also been the catalyst for our most transformational year. In October 2021, Enbridge acquired MIEC and related infrastructure for approximately \$3.2 billion. In addition to the Ingleside facility, Enbridge acquired Moda's Taft Terminal and Viola Pipeline, a minority non-operating interest in the Cactus II Pipeline and development project in St. James. The transaction underscores Moda's track record of delivering value to stakeholders through the development and commercialization of best-in-class solutions for customers.

Moda acquired MIEC in 2018 and further developed and expanded the facility, establishing it as the leading crude oil export facility in the U.S. and a critical link connecting the Permian and Eagle Ford shale plays to global markets. During the three-year ownership period, Moda constructed approximately 13.5 million barrels of storage capacity, introduced new product lines, incorporated best-in-class environmental controls, including safety and firefighting upgrades, reduced permitted emissions intensity and augmented waterfront capabilities to allow for the berthing of Very Large Crude Carriers ("VLCCs").

Vopak Moda Houston

"With the ability to safely and reliably transport ammonia and pressurized gases for our current and future customers, **Vopak Moda Houston is a vital link in the new energy transition supply chain.** Vopak Moda Houston is well positioned to become the premier low-carbon ammonia and hydrogen terminaling hub on the U.S. Gulf Coast."

- **Jonathan Ackerman**
Moda Midstream CEO & Co-Founder

VMH is a world-class deepwater storage and terminaling facility in the Port of Houston, the number one U.S. port in terms of total waterborne tonnage and home to the nation's largest and world's second-largest petrochemical complex. Strategically located in Houston's refining and petrochemical corridor and in close proximity to multiple third-party feedstock and finished product pipelines, the VMH terminal was built to handle anhydrous ammonia and specialty pressurized gases. Of note, VMH is the only existing waterborne ammonia terminal in the Port of Houston with deepwater capabilities. The state-of-the-art facility is designed to berth Very Large

Gas Carriers ("VLGCs"), as well as smaller vessels and barges and has existing permits for additional berthing capability.

Jointly owned (50/50 ownership), developed and operated with Royal Vopak, the facility combines the strengths of Vopak's global resources, experience and long history of operations with Moda's successful track record of developing and operating premier independent logistics infrastructure and deep roots in the Houston Ship Channel.





Mission, Vision & Values

The Moda team is passionate about working together to build and maintain a world-class terminaling company that is deeply rooted in our mission, our vision and our values.

Our Mission

To deliver advantaged, sophisticated infrastructure for our customers' liquids handling needs through innovation and entrepreneurial effort, operational excellence and a safe and reliable environment for all our stakeholders.

Our Vision

To be the independent liquids terminaling and logistics company that customers consider their partner, employees appreciate as their home, citizens regard as an ally to their communities and the environment and investors value as one of their greatest success stories.

Our Values

We are a family-oriented company that is built on and sustained by enduring relationships. We have a foundational commitment to treating all our employees and everyone we do business with like family members. We hire the best and foster an inclusive, collaborative environment where everyone can flourish and participate in our success. We believe that our success is a direct result of living by our values and honoring the impact our values have on our employees, customers, investors, contractors and the communities where we live and work.



INTRODUCTION

OUR COMPANY

OUR SUSTAINABILITY
STRATEGY

GOVERNANCE

ENVIRONMENTAL

SOCIAL

ABOUT THIS
REPORT

FORWARD-LOOKING
STATEMENTS

SASB INDEX



OUR SUSTAINABILITY STRATEGY

At Moda, we are committed to our values and creating value for our stakeholders. Our team aims to achieve long-term performance goals by building a sustainable, reliable business that incorporates best practices and processes for ESG excellence in everything we do. We are continuously seeking further development and investment opportunities that allow us to sustainably grow, while maintaining alignment with our ESG values.

Our sustainability strategy underpins our mission to be the leading provider of resilient liquids supply chain solutions by developing and operating the industry's most efficient and strategically located infrastructure. With a foundation of strong operational and ethical values, we focus on value creation that is woven throughout our business to address those areas most impactful to our long-term success. We believe the assessment and monitoring of these sustainability focus areas is not only inherently the right thing to do, but also crucial to successfully executing on our projects and long-term business strategy.

**Anticipate the needs
of our customers and
deliver results**



**Challenge the status quo
with insatiable curiosity
and creative thinking**



Our Top Priorities to Execute on Our Sustainable Business Strategy

- Ensuring the safety and security of our team members, contractors and neighbors
- Safely, reliably and efficiently operating our facilities
- Developing best-in-class terminaling solutions for our customers
- Applying best operational practices and processes to increase reliability, while minimizing risks
- Driving growth through strategic acquisitions, partnerships and organic expansion
- Creating a world-class organization for our employees
- Providing superior customer service
- Minimizing our environmental footprint
- Ensuring we comply with all applicable laws and regulations
- Being a responsible partner to all our stakeholders

INTRODUCTION

OUR COMPANY

**OUR SUSTAINABILITY
STRATEGY**

GOVERNANCE

ENVIRONMENTAL

SOCIAL

ABOUT THIS
REPORT

FORWARD-LOOKING
STATEMENTS

SASB INDEX



Spotlight: A Critical Link in a Lower Carbon Supply Chain

The demand for lower carbon fuels and solutions to store, handle and transport these fuel sources is expected to grow exponentially over the next decade. While the commodities may be different, our strategy and the premium services we seek to provide remain unchanged. By listening to our customers, analyzing market dynamics and leveraging our expertise, we intend on replicating our historical success to further develop Moda's infrastructure platform.

With its first-mover advantage handling ammonia and petrochemical feedstocks, as well as strategic location and proximity to key market hubs and value chain participants, VMH is well-positioned to be a vital link in the new energy transition supply chain. Additionally, the Moda team is actively pursuing opportunities to continue to expand our

infrastructure, while leveraging our team's deep expertise and proven track record for operational and strategic excellence. This will allow us to continue to provide differentiated low-carbon terminaling and logistics solutions to meet customer demands.

As Moda continues to grow and expand our operations, we will continue to rely on best-in-class environmental controls and innovation to manage our emissions. In addition to seeking opportunities to grow our asset base and terminaling solutions, we continually seek and invest in opportunities to implement technology advancements throughout our infrastructure, including inbound pipelines, storage tanks, intra-terminal piping components, vapor combustion units and loading equipment. In addition, when we design new facilities or retrofit existing facilities, we work with our engineering and operations teams to identify options for minimizing the footprint of our terminaling and logistics assets, with standards that meet or exceed Best Available Control Technology ("BACT") and implementing sector-leading integrity practices. In addition, the Moda team works to identify best practices to prevent potential releases at our facilities, as well as stormwater impacts during construction efforts. This enables a seamless transition from construction to operations, and ensures compliance with all local, state and federal standards.





INTRODUCTION

OUR COMPANY

**OUR SUSTAINABILITY
STRATEGY**

GOVERNANCE

ENVIRONMENTAL

SOCIAL

ABOUT THIS
REPORT

FORWARD-LOOKING
STATEMENTS

SASB INDEX

We have a strong history of excellence in asset development and commercialization while simultaneously promoting sustainable business practices. As many of our customers are making commitments to reduce greenhouse gas ("GHG") emissions and use resources more efficiently, delivering solutions that enable our customers to accelerate their own journeys to achieve net zero targets is a significant opportunity for us. From installing best-in-class environmental and emissions control technology to implementing operational efficiency and optimization measures, our team is delivering logistics, terminaling and storage solutions to help our customers take meaningful steps towards achieving their environmental goals.

This year, we adapted our strategic focus in response to domestic energy supply growth and emerging opportunities presented by post-COVID global demand and energy transition.



2015

SHALE MATURITY/ MANUFACTURING

2022

POST-COVID & ENERGY TRANSITION

- > Infrastructure to balance North American supply with global markets
- > Rapid development and commercialization of leading export terminal with best-in-class operating capabilities
- > Capturing customer demand for a resilient supply chain in a volatile world
- > Developing economies and global low-carbon initiatives create strong underlying "demand pull" for North American liquids and petrochemical feedstocks
- > Delivering solutions that enable our customers to accelerate their move towards "net zero" energy targets and the energy transition





Our ESG Focus Areas

Moda has identified business-relevant focus areas to guide our ESG initiatives and decision-making by assessing the most relevant and impactful performance metrics for our business, our investors and other key stakeholders. This report follows the guidance of the Sustainability Accounting Standards Board ("SASB") standards of the International Financial Reporting Standards ("IFRS") and the recommended disclosure topics for the Oil & Gas Midstream Industry. In addition to the disclosures recommended by SASB, we have identified relevant topics that we consider impactful to our internal and external operating environment, such as those related to employee diversity, workforce health and safety and data security.

By effectively measuring our progress and performance related to these metrics, we are able to assess whether relevant sustainability-related risks and opportunities are aligned with our overall business strategy. In addition, as we evaluate these sustainability-related risks and opportunities through the broad lens of our governance, strategy and risk management processes, we can better monitor our performance over time. The graphic below sets out the specific topics that we believe are significant to our sustainability approach and to our overall business strategy.

INTRODUCTION

OUR COMPANY

OUR SUSTAINABILITY STRATEGY

GOVERNANCE

ENVIRONMENTAL

SOCIAL

ABOUT THIS REPORT

FORWARD-LOOKING STATEMENTS

SASB INDEX

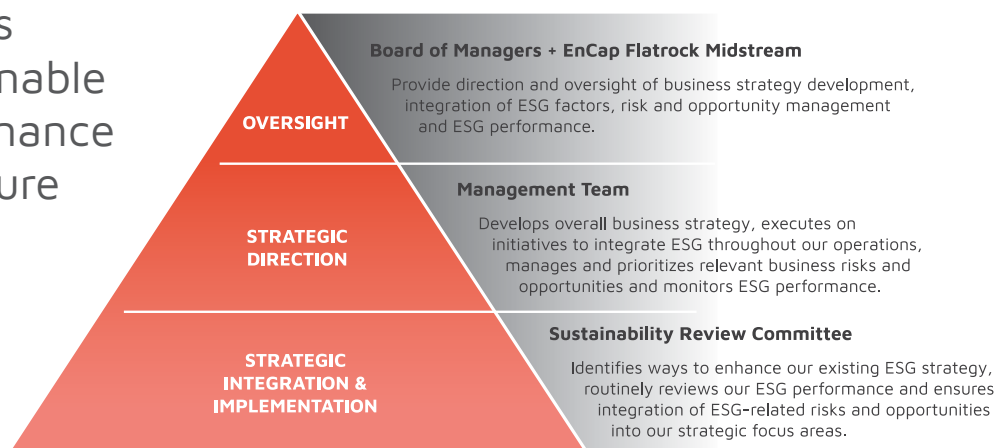


*Represents other strategic focus areas which are beyond the scope of the topics suggested by SASB for the Oil & Gas Midstream industry.



GOVERNANCE

Moda's Sustainable Governance Structure



Strong leadership and governance practices provide the foundation for our business and inspire trust critical for creating strong and sustainable relationships.



Corporate Governance

We believe strong oversight and governance is essential for sustainable and ethical business operations. Moda is a portfolio company of EnCap Flatrock Midstream ("EnCap Flatrock"), a leading provider of growth capital to independent midstream energy companies.

To foster Moda's long-term success, EnCap Flatrock maintains a strong presence on Moda's Board of Managers (our "Board"), which is comprised of six members. Our management team works in collaboration with our Board to develop our overall business strategy and to integrate relevant ESG factors into our business processes. We report on significant ESG issues and provide details of ongoing ESG developments during each quarterly Board meeting. This information is used by EnCap Flatrock to measure our success in achieving the objectives outlined in our ESG policy and the impact on our overall financial performance. Our reporting and disclosures are designed to highlight financial and operating risks and opportunities for our business.

**Act with urgency,
passion and purpose,
while maintaining
perspective**

INTRODUCTION

OUR COMPANY

OUR SUSTAINABILITY
STRATEGY

GOVERNANCE

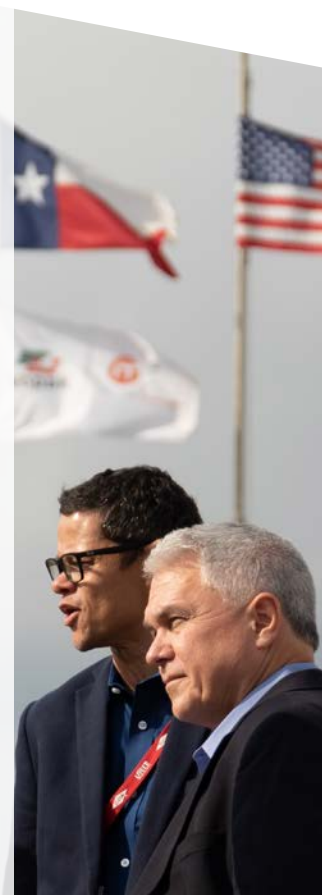
ENVIRONMENTAL

SOCIAL

ABOUT THIS
REPORT

FORWARD-LOOKING
STATEMENTS

SASB INDEX





With direction from our Board, we focus on maintaining the appropriate level of oversight in the areas of financial controls, audit, cybersecurity, risk management and business activities. As a privately-owned company, we strive to be nimble. However, we are committed to building a business with strong governance practices that is enhanced by the engagement of and input from our external auditors and other professional service providers. Our senior management team and corporate leaders design and implement internal controls to mitigate operational and financial risks. The effectiveness of many of these controls is subject to testing annually by our independent auditor in conjunction with our annual financial statement audit. We are routinely assessing the design and effectiveness of our policies and controls in providing effective oversight and taking appropriate efforts to remediate any issues or gaps identified.

Furthermore, we promote a strong ESG framework within our joint venture, VMH. Management of the joint venture is conducted through an asset-level senior leadership team that has been selected and approved by the VMH Board of Directors. VMH is comprised of managers for each function at the joint venture level, allowing for dedicated resources while Moda provides additional oversight, as needed. Since the joint venture's inception, Moda's senior management team has been actively engaged in the commercialization, construction and development efforts, and governance is split equally with our joint venture partner. VMH established a Control Risk Self Assessment ("CRSA") team comprised of department managers to review, adopt and address various aspects of business practices (e.g., Code of Conduct, antitrust, controls, etc.), to ultimately strengthen the joint venture's internal controls and risk mitigation.

INTRODUCTION

OUR COMPANY

OUR SUSTAINABILITY
STRATEGY

GOVERNANCE


ENVIRONMENTAL

SOCIAL

ABOUT THIS
REPORT

FORWARD-LOOKING
STATEMENTS

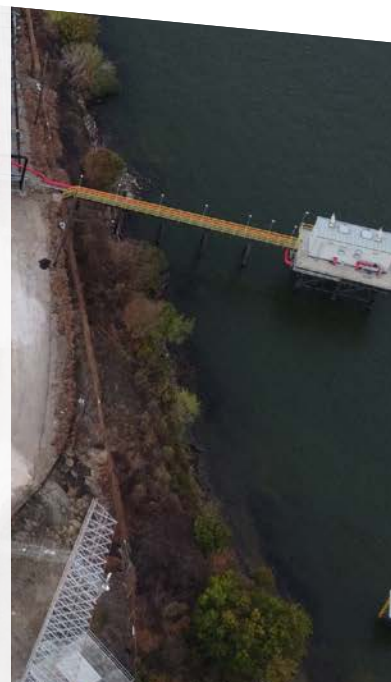
SASB INDEX



"Moda's Ingleside Energy Center and other assets were sold to Enbridge in a transaction closing in October 2021. As part of the acquisition decision, Enbridge publicly highlighted the assets passed a rigorous ESG related diligence analysis, including 'testing the assets against a range of energy transition scenarios.' **Flatrock is proud of management's success in building a resilient export business synchronous with a modern ESG strategy.**"

- **Zach Kayem**

Managing Director, EnCap Flatrock &
Moda Board Member



Competitive Behavior & Business Ethics



INTRODUCTION

OUR COMPANY

OUR SUSTAINABILITY
STRATEGY

GOVERNANCE

ENVIRONMENTAL

SOCIAL

ABOUT THIS
REPORT

FORWARD-LOOKING
STATEMENTS

SASB INDEX

Our decisions are guided by our foundational values. Modeling the highest standards of ethics and compliance helps us create and maintain a culture of integrity and ensures we are conducting our business and treating our customers with the utmost respect.

Our long-term success depends on each Moda team member's actions. Our team is committed to fairness, honesty and transparency throughout our everyday operations. Our commitment is codified in our company's policies and our Code of Conduct. Our policies and procedures ensure doing the right thing is pervasive throughout our day-to-day interactions.

During 2021, we had no monetary losses associated with rates, pipeline access, price gouging, price fixing, legal proceedings associated with federal pipeline and storage regulations or any associated with enforcement of industry regulations.

Moda focused on a commitment to training and continuous education at VMH during 2021. We use internally developed materials and instruction, along with our third-party online training platform with an extensive library, to monitor, measure and evaluate our ethics and compliance.

Communication & transparency are integral to effective governance & critical for inspiring trust.

Management sets the tone for organizational behavior and communicates performance expectations by clearly stating, through our website & communications, our:

- > Mission, Vision & Values
- > Health, Safety, Security & Environmental Policy
- > Health, Safety, Security & Environmental Minimum Standards

**Do the right
thing every day**



In 2021, Moda and VMH both adopted a compliance whistleblower hotline, which utilizes an anonymous call-in reporting system and establishes processes and procedures for collecting, reviewing and investigating allegations. The hotline is managed by a third-party service, which protects the anonymity of the reporting party and preserves the integrity of the reporting process.





Risk Management

Our risk management process includes evaluating our business from a variety of perspectives, including financial, regulatory, operational and reputational, and also considers the risks posed by the current cybersecurity environment. Through these varying lenses, Moda senior management will proactively identify existing and potential emerging risks and opportunities to our company and prioritize risks based on the likelihood of occurrence and magnitude of consequences. Our process enables us to effectively manage risk exposure, while capturing opportunities to drive informed business decisions and resource allocation. The results of our evaluation process are discussed with our Board, who provides oversight of the most material risks.

Moda consistently monitors the regulatory landscape for emerging issues and adopting industry best practices. By staying abreast of new legal and regulatory requirements, we can train, communicate and prepare our team to ensure we are in compliance with all laws and regulations that govern our business.

We are also aware of the inherent physical risks to our assets due to our location on the Gulf Coast and the impacts of severe weather events. We continually evaluate these risks and adapt plans for emergency preparedness and response, as deemed necessary. Refer to the Emergency Preparedness & Response section on [Page 26](#) for further details.

We recognize the role we play in the energy transition value chain and the opportunities that have emerged in our industry. We engage with our existing and potential customers to understand their sustainability practices. By developing solutions to advance our customers' sustainability goals, we can maximize on these opportunities and provide additional value-added service offerings to differentiate us from competitors, thus increasing customer loyalty and our competitive advantage.

**Work hard and
commit to excellence**



INTRODUCTION

OUR COMPANY

OUR SUSTAINABILITY
STRATEGY

GOVERNANCE

ENVIRONMENTAL

SOCIAL

ABOUT THIS
REPORT

FORWARD-LOOKING
STATEMENTS

SASB INDEX





Our Sustainability Review Committee

Moda's commitment to building a sustainable, reliable business extends throughout our company, as every member of the Moda team plays a role in executing our strategy. Our Sustainability Review Committee is comprised of senior management and leaders from a cross-functional mix of corporate departments. We believe varying perspectives ensure our committee can appropriately identify and address ESG-related risks and opportunities and provide recommendations on initiatives and best practices. The Sustainability Review Committee also reviews other relevant ESG reporting initiatives throughout our industry, routinely reviews ESG performance and internal reporting requirements and works to identify, develop and enhance our existing ESG strategy.

Key focus areas for the Sustainability Review Committee include:

- Evaluating industry ESG disclosure best practices and applicable standards
- Ensuring our business practices and strategy incorporate the management of ESG-related risks and opportunities to better align our strategic focus areas
- Collaborating with our business development team to evaluate new investment opportunities and customer solutions that support our ESG strategy

INTRODUCTION

OUR COMPANY

OUR SUSTAINABILITY
STRATEGY

GOVERNANCE

ENVIRONMENTAL

SOCIAL

ABOUT THIS
REPORT

FORWARD-LOOKING
STATEMENTS

SASB INDEX

Moda is proud to have had the opportunity to play a vital role in the energy transition value chain by providing terminaling services for the VLCC Sea Pearl in January 2021, the world's **first carbon-neutral oil export vessel**. We are continuously committed to providing **best-in-class solutions** to help our customers achieve their net zero targets.





Data Security

As cybersecurity threats continue to emerge and evolve, protecting our data and maintaining the trust of our customers and business partners is of paramount importance to us.

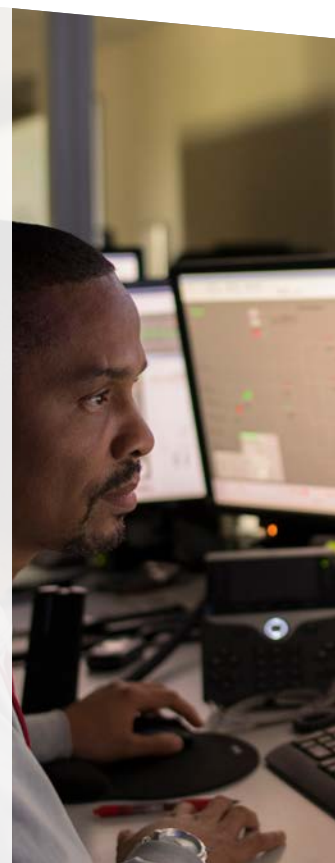
REPORTABLE DATA BREACHES IN 2021

We have implemented multiple measures to monitor and improve our cybersecurity readiness and infrastructure. Moda is committed to maintaining the confidence of our customers, employees and other stakeholders.

[INTRODUCTION](#)[OUR COMPANY](#)[OUR SUSTAINABILITY
STRATEGY](#)[GOVERNANCE](#)[ENVIRONMENTAL](#)[SOCIAL](#)[ABOUT THIS
REPORT](#)[FORWARD-LOOKING
STATEMENTS](#)[SASB INDEX](#)

Our IT service provider ensures the protection of our business-critical data through a variety of measures:

- **Third-party 24/7 Monitoring** through a locally staffed expert team, which includes:
 - Cybersecurity monitoring, including end-user and cloud services
 - Robust threat intelligence systems
 - Quick response to threats (e.g., data breaches, phishing attempts, malware and ransomware attacks, gaps in visibility, multi-vector and cloud infrastructure attacks, limited security resources, etc.)
- **Third-party daily and monthly threat monitoring**
- **Security awareness training and simulated phishing platform** requires continuous participation from our employees to raise awareness of potential threats and allows us to provide remediation training through a **comprehensive library of security awareness content**
- **Regular communications** regarding cybersecurity threats and risks to management
- **System architecture** designed to protect the integrity of operations from cyberattacks
- **Physical safeguards** to prevent unauthorized access, such as biometric readers
- **Dual factor authentication** to protect both user credentials and strengthen security
- **Streamlined patch management system**
- **Endpoint protection and response**
- **Quarterly business updates to management** on status of all company hardware and IT configurations





ENVIRONMENTAL

"Moda is committed to being the **leading independent liquids infrastructure company** through sustainable operations and environmental stewardship."

- Ian Levine
Moda Midstream, CFO & Strategy

As we further progress on our ESG journey and navigate the energy transition, we strive to limit our environmental impact and to deliver solutions to enable and enhance the sustainability efforts of our customers. Reliable and safely produced American energy fuels the world. As global energy demand continues to grow, companies operating in the oil and gas industry face increasing pressure to demonstrate their commitment to safeguarding the environment – not just by adhering to environmental requirements, but by also working to continually improve processes, controls and technology. We are committed to operating our assets in a manner that complies with regulatory and legal requirements, aligning our operations with industry best practices and protecting our employees and the communities in which we live and work.

Demonstrate good citizenship by respecting our natural resources, the environment and the communities where we live and work



INTRODUCTION

OUR COMPANY

OUR SUSTAINABILITY
STRATEGY

GOVERNANCE

ENVIRONMENTAL

SOCIAL

ABOUT THIS
REPORT

FORWARD-LOOKING
STATEMENTS

SASB INDEX





Managing and minimizing both our impact, as well as our customers' impacts to the environment, is a crucial link to achieving our long-term growth strategy and creating value for all stakeholders. Moda is committed to delivering sustainable and reliable logistics solutions to our customers to help them meet their carbon footprint reduction goals and targets.

From the beginning, our company has integrated environmental stewardship into every phase of Moda's growth.



INTRODUCTION

OUR COMPANY

OUR SUSTAINABILITY
STRATEGY

GOVERNANCE

ENVIRONMENTAL

SOCIAL

ABOUT THIS
REPORT

FORWARD-LOOKING
STATEMENTS

SASB INDEX

Spotlight: Protecting the Environment, While Increasing Efficiency

The Moda team has a long history of investing in and developing infrastructure to create value, while protecting the environment. When Moda acquired MIEC in 2018, our environmental and engineering teams identified several efficiency improvement opportunities and voluntarily upgraded the controls of assets that were under construction. The below upgrades and implemented measures resulted in significant emissions intensity reductions (permitted emissions per barrel of throughput) volatile organic compounds ("VOCs"), nitrogen oxides ("NOx") and other regulated compounds as well as increased operational efficiencies to better serve our customers:

- Upgraded the tank seals, slotted guide poles, columns and leg socks, reducing emissions per barrel by more than half, allowing Moda to construct additional tanks at the terminal, without increasing the permitted emissions allowance.
- Optimized the supplemental fuel stream, control algorithms and the burner stack, resulting in more efficient combustion and allowing Moda to increase the terminal's vessel loading throughput rate, while simultaneously reducing emissions per barrel.
- Designed and upgraded deepwater berths to load customer vessels at advantaged throughput rates relative to peers, avoiding slow-load delays and minimizing ship idling dockside emissions. These marine advantages were further enhanced by the facility's proximity to open water and Moda-arranged dedicated tug services, which collectively delivered shorter voyages and optimal turnaround times for customers.
- Voluntarily implemented quarterly instrument monitoring of the flanges and connectors in addition to quarterly leak detection and repair program required by regulation for valves, pumps and compressors.
- Engaged U.S. Coast Guard and Pilots to monitor traffic and instituted "slow bell" system warning passing vessels of excess speeds.

These efforts meaningfully contributed to the value creation that was realized through the successful divestiture of MIEC in 2021.



Greenhouse Gas Emissions

Moda is committed to limiting our GHG emissions. We are continuously monitoring our impact, as well as any changes in the regulatory environment to ensure we meet all applicable regulations and align our GHG emissions management with industry best practices. The management of GHG emissions has emerged as a significant operational, reputational and regulatory focus area for our industry, and we recognize that our commitment to implement practices to improve environmental performance is important to the longevity of our business.

During 2021, our primary sources of emissions were from legacy operations acquired by

Enbridge. At MIEC, greenhouse gas emissions resulted from the combustion of natural gas and crude vapors during storage and vessel loading operations, as well as during natural gas combustion in the hot oil heater. We employed a series of control technologies, including storage tanks designed with internal floating roofs, gasketed fittings, slotted guide pole sleeves, wipers, floats and leg socks to prevent the accumulation of vapors.

At VMH, our operational emissions levels were significantly below required reporting levels under U.S. Environmental Protection Agency ("EPA") greenhouse gas rules¹. Furthermore, emissions at the facility were significantly curtailed by the design and operations of the facility. Refer to the Air Quality section on [Page 22](#) for further details.

100%
ELECTRIC-POWERED COMPRESSION
IN OUR VMH OPERATIONS

Not only do we aim to limit our own environmental impact, but we also strive to be a vital player in the evolving supply chain and are continuously developing and investing in **innovative, best-in-class environmentally conscious solutions** for our customers. We have established memberships with various organizations to stay abreast of the latest efforts to **accelerate the adoption of lower-carbon energy** as we aim to be a leader in the energy transition.

INTRODUCTION

OUR COMPANY

OUR SUSTAINABILITY
STRATEGY

GOVERNANCE

ENVIRONMENTAL

SOCIAL

ABOUT THIS
REPORT

FORWARD-LOOKING
STATEMENTS

SASB INDEX

¹The threshold for reporting greenhouse gas emissions from covered sources to the U.S. EPA is 25,000 metric tons of CO₂e per year.



In 2021, we joined the Ammonia Energy Association (“AEA”) to raise awareness of ammonia as a vital energy source in a sustainable energy economy and **collaborate with our industry on the decarbonization of ammonia** for existing applications and adoption of low-carbon ammonia in new applications.



In 2020, Moda Midstream became the first liquids terminaling company to join The Environmental Partnership. The Environmental Partnership (“TEP”) consists of leading members of the industry that are committed to improving environmental performance. TEP enables companies, including a number of our customers, to **collaborate and leverage programming designed to help reduce emissions throughout the energy value chain**. Participation in TEP is important to Moda, especially the opportunity to collaborate with our customers and peers.



INTRODUCTION

OUR COMPANY

OUR SUSTAINABILITY STRATEGY

GOVERNANCE

ENVIRONMENTAL

SOCIAL

ABOUT THIS REPORT

FORWARD-LOOKING STATEMENTS

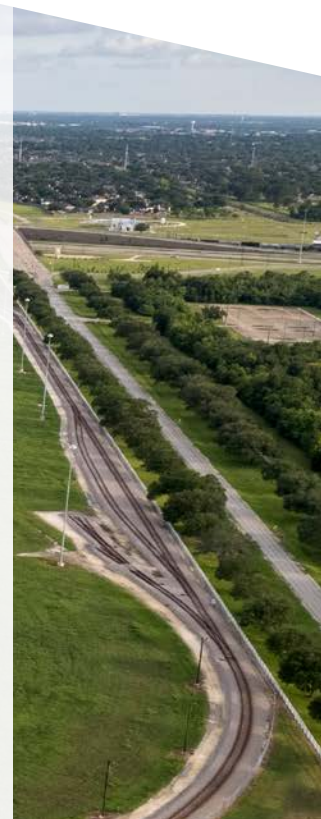
SASB INDEX

Air Quality

Moda is committed to minimizing environmental risks and impact to human health, and we regularly assess opportunities to control and reduce air pollutants from our operations. As a midstream company with operations in Texas, we must comply with the Texas Commission on Environmental Quality’s (“TCEQ”) permitting process for new construction and modifications, applying to both a retrofit of existing infrastructure and new construction.

The permitting process related to air quality includes submitting allowable emission rates for VOCs, NO_x, carbon dioxide (CO₂) and other regulated materials based on design controls and specifications, as well as demonstration of regulatory compliance and protective off-property health effects. Ongoing compliance requires monitoring and reporting in accordance with these strict state and federal limits. In the past three years, we have not received any environmental permit violation notices from any agencies.

We ensure we meet regulatory requirements and align our management of emissions with industry best practices. We strive for Lowest Achievable Emission Rate (“LAER”) equivalent emissions control technology, even when the less-stringent BACT is the requirement.



Spotlight: VMH Implements Best-in-Class Environmental Controls

When we are designing or constructing new projects, our team is heavily focused on protecting our team and the communities in which we live and work. That is why we aim to exceed regulatory requirements and invest in best-in-class environmental controls to provide value to all our stakeholders, including effective preventative measures for fugitive emissions and other harmful releases.

In designing the infrastructure associated with VMH's ammonia handling and LPG operations, we installed the following safety features and controls:

- > Closed-loop system to handle vapors from the tanks to eliminate any routine flaring to the environment
- > Double wall full containment tanks
- > Elevated American National Standards Institute ("ANSI") pipeline rating
- > 24/7 control room monitoring
- > Continuous vapor and fire detection systems and on-site water storage
- > Internal and tandem seal pumps
- > Mounded installation of bullet tanks to lower risk of damage to a tank if there is a fire or thermal incident
- > Dock water curtain and tank/equipment deluge system
- > Emergency release coupling on loading arms
- > Fire protection and water spray equipment for water cooling, including source redundancy
- > Double-valve technology for drains
- > Other critical safety devices and design redundancies, such as spare compressors and backup generators





Ecological Impacts

Moda's commitment to the maintenance of healthy and diverse ecosystems within the communities in which we operate is embodied in our approach to project investments and operations management.

Protecting Natural Resources & Conservation

Both the Houston Ship Channel and Corpus Christi are important commercial centers for the energy industry on the Gulf of Mexico. Moda is committed to protecting natural resources and conservation of the nearby land and the waters of the Gulf. We pride ourselves on being a responsible community member and a good environmental steward.

O EPA REPORTABLE PRODUCT RELEASES IN 2021 FROM OUR AMMONIA & LPG HANDLING SERVICES

When we design, permit, construct and operate infrastructure, we strive to exceed standards and apply best practices. Some of the approaches we utilize to minimize our footprint include constructing fit-for-purpose tanks, designing larger walled secondary containment, avoiding nearby undeveloped areas with natural habitats and preserving biodiversity and valuable local ecosystems.

We are committed to protecting the communities in which we live and work. Moda has a robust process in place to screen for potential ecological impact, which may include a wetlands delineation, threatened and endangered species study, cultural resource study, flood plain analysis or zoning regulation identification if applicable site characteristics are present. We strive to avoid sensitive areas and eliminate or reduce impacts in accordance with regulatory and industry best practices. When warranted, we work with subject matter

experts specializing in each ecological impact to ensure all screening criteria are considered and regulations are met.

Although none of the land where Moda operates is in an area with protected status, we endeavor to respect and safeguard the environment and always look for opportunities to go beyond the minimum expectations or regulations.

We are continuously exceeding regulatory standards for our assets to ensure the ultimate integrity of all of our assets. Although the pipeline connecting VMH's marine site and inland site is not subject to integrity management program regulations, VMH has established operating procedures exceeding the required standards, including performing regular preventative maintenance and inspections using technologically enhanced tools, such as smart pigs.

INTRODUCTION

OUR COMPANY

OUR SUSTAINABILITY STRATEGY

GOVERNANCE

ENVIRONMENTAL

SOCIAL

ABOUT THIS REPORT

FORWARD-LOOKING STATEMENTS

SASB INDEX



Spotlight: Our Commitment to Sustainable Operations: Exceeding Minimum Safety Requirements

Our commitment to exceeding requirements and operating sustainably is reflected in the design of our Marine Loading Arms ("MLA") for handling liquified gasses at VMH. The MLAs are designed with an Emergency Release Coupling ("ERC") that allows quick disconnection of the loading device from the ship's manifold, with maximum security and without spilling of product. Disconnecting can take place at full loading capacity and maximum pressure. In an emergency scenario, these measures would reduce any impact of product contamination to the surrounding environment. Along with the ERCs, our state-of-the-art automation system would activate a safe shutdown of operations to ensure protection of our employees and environment.

Spotlight: Moda Partners with Local Organizations to Protect the Land & Water

Moda is a leader in the development and operation of marine terminaling assets. The integrity of our maritime operations is paramount. When designing VMH, our engineering team worked closely with the U.S. Coast Guard and Port of Houston to develop a structural design to ensure proper mooring infrastructure and regulatory compliance. We conducted modeling and mooring analysis to determine the optimal safety structure and completed a water sustainability assessment with Coast Guard approval. Prior to being placed in operation in 2021, the VMH marine facility passed U.S. Coast Guard inspection and approval with no deficiencies identified.



We work to protect our waterways by coordinating on a daily basis with the Port of Houston, Houston Pilots and the U.S. Coast Guard. Together we strive to ensure safe and reliable transit for all maritime vessels.



Critical Incident Risk Management

The safety of our workforce and the communities in which we live and work is one of our top priorities. We believe our success hinges on our ability to keep our employees safe, protect the public and maintain the integrity of our assets. From the design and construction phase of our assets, to monitoring, preventing and responding to emergencies, we work proactively to address our operational safety risks.

Emergency Preparedness & Response

Although Moda's infrastructure design, operations procedures and safety programs are designed to help prevent incidents from ever occurring, we also proactively prepare to respond effectively to any emergency that may occur onsite, in the water or at our facilities.

Moda maintains comprehensive Facility Response Plans ("FRP") for all facilities and provides in-depth emergency preparedness and response training to employees to ensure our team is prepared to respond to emergency situations quickly and safely. In 2021, we provided our operators with Hazardous Waste Operations and Emergency Response and Emergency Response Technician Certification training to ensure our operators are well-prepared to respond to emergencies that may arise.

We work to ensure our terminal design exceeds National Fire Protection Association and industry standards. All of our facilities have the necessary equipment to respond to identified emergency scenarios. At VMH, we have invested in a world-class fire emergency response system, including fire protection

equipment water spray source redundancy system and on-site water storage. We also have firewater pumps, a firewater tank and standby pumps that are able to pump directly from the Houston Ship Channel, a nearly infinite supply of fire water.

Our operations are monitored 24 hours per day, 365 days per year to ensure immediate response in case of loss of product or containment. We also closely monitor reportability to applicable regulatory agencies to ensure we are always in compliance. Critical incident events that occur must undergo a root cause analysis to prevent recurrence and promote education.

To ensure our team is prepared for emergencies that may occur, we conduct annual emergency response training exercises to simulate, practice and evaluate the success of our emergency response plans. These exercises are conducted in accordance with applicable regulations and are administered with the involvement of local emergency responders, regulatory agencies, employees, including leadership participation, and key contractors.

INTRODUCTION

OUR COMPANY

OUR SUSTAINABILITY
STRATEGY

GOVERNANCE

ENVIRONMENTAL

SOCIAL

ABOUT THIS
REPORT

FORWARD-LOOKING
STATEMENTS

SASB INDEX





INTRODUCTION

OUR COMPANY

OUR SUSTAINABILITY
STRATEGY

GOVERNANCE

ENVIRONMENTAL

SOCIAL

ABOUT THIS
REPORT

FORWARD-LOOKING
STATEMENTS

SASB INDEX

Continuous improvement is an essential element in our approach to emergency preparedness and response efforts. Our training exercises allow us to gain a better understanding of roles and responsibilities in the event of an emergency and help us respond more effectively. We continuously evaluate and improve our system by incorporating best practices and lessons learned from incidents and exercises into our preparedness planning and training.

We have an unwavering commitment to leading the way in promoting the safety of our community and we demonstrate this commitment through our active involvement and leadership role in²:

- Coastal Plains Local Emergency Planning Committee ("LEPC")
- East Harris County Manufacturers Associations ("EHCMA")
- Houston Ship Channel Security District
- Lone Star Harbor Safety Committee
- Deer Park Community Advisory Council ("DPCAC")

Together, with local officials, first responders and other stakeholders, we develop and maintain community emergency response plans, promote public awareness about emergency response initiatives and manage our local emergency alert system.

Annually, our team participates in the **Deer Park LEPC's "Hot Zone" and "Shelter in Place" conferences** to promote **hazard awareness and safe operations.**

An important part of Moda's critical incident risk management strategy is preparation and training for natural disasters, like hurricanes and tropical storms. Hazards from windstorms can include storm surge, high winds, tornadoes, flooding and potential impacts to personnel. Moda personnel are trained to respond to these risks to ensure the safety and well-being of our people, property and environment. The planning and procedures are detailed in our Hurricane Preparedness Plan. Once a threat is identified, personnel will consider all federal, state and local directives and follow U.S. Coast Guard Port Hurricane Conditions. Hurricane tracking and forecast data is gathered from a variety of sources, including private weather forecasting services. Furthermore, internal stakeholder meetings are regularly held to ensure proper communication and feedback across the organization. Each department maintains an up-to-date checklist of hurricane related activities, which includes step-by-step actions necessary to protect personnel, the public and facilities and resources in the event of a storm. Where appropriate, management will put in place an Incident Response Team to ensure the facility's security during and immediately following the storm.

²Prior to the divestiture of MIEC, we were also members of the Port Industries of Corpus Christi, San Patricio Economic Development Corporation, Corpus Christi Regional Economic Development Corporation, and United Corpus Christi, Ingleside, and Portland Chamber of Commerce.



SOCIAL



INTRODUCTION

OUR COMPANY

OUR SUSTAINABILITY
STRATEGY

GOVERNANCE

ENVIRONMENTAL

SOCIAL

ABOUT THIS
REPORT

FORWARD-LOOKING
STATEMENTS

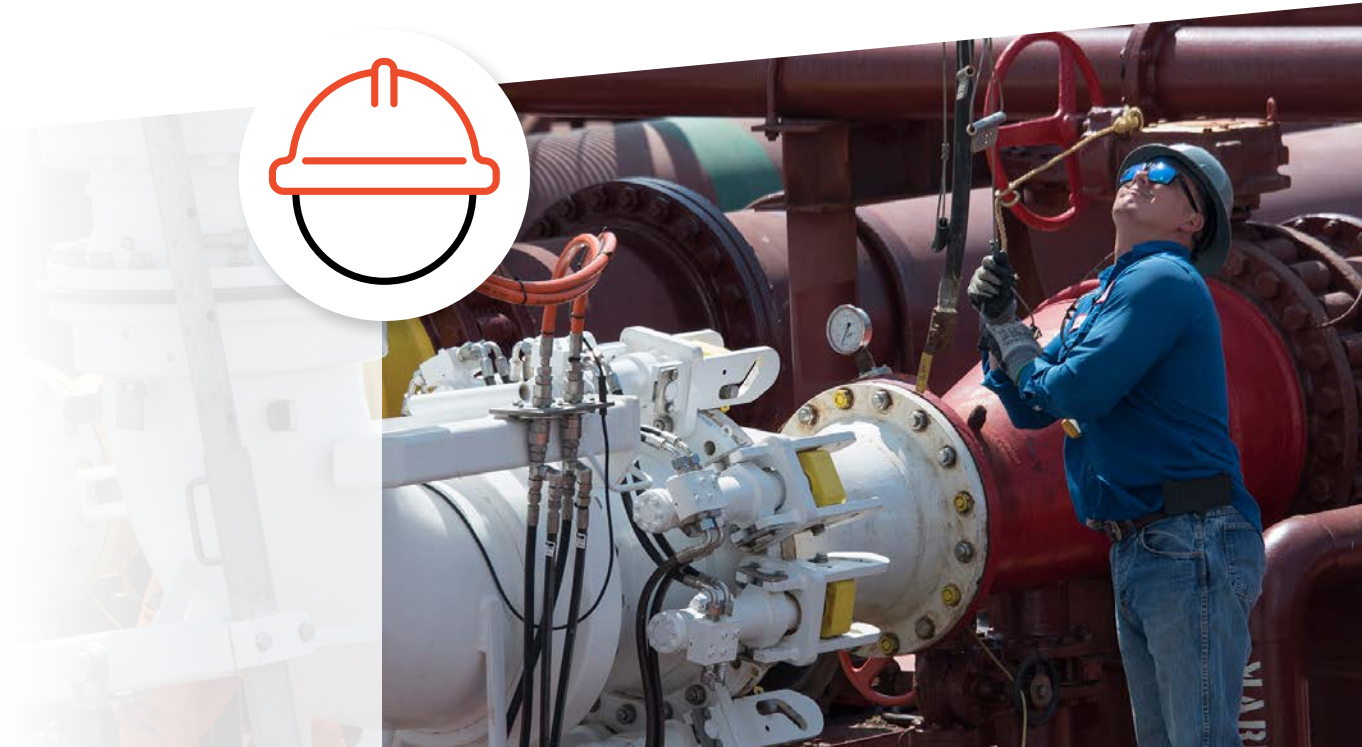
SASB INDEX

We believe the **success of our company** is built on and sustained by **enduring relationships**.

Workforce Health & Safety

At Moda, safety is at the heart of everything we do. We strive to foster a culture of safety excellence based on a shared sense of ownership and vigilance with every team member. We continuously prioritize health and safety, make investments in resources and establish protocols to help protect our team members and the communities in which we live and work daily. We have a responsibility to provide safe, healthy and sound working conditions for all employees, contractors and visitors, to protect our natural resources and to safeguard the environment.

Put safety
first





Our Culture of Safety

Our strong safety culture and reliable operational performance is driven by a comprehensive safety management program which provides a framework for integrating safety performance into our core business activities. The program helps us to plan, deploy, review and improve our operations.

**We are proud of
our 2021 safety
record At VMH:**

0

TOTAL RECORDABLE INCIDENT RATE

TOTAL VEHICLE INCIDENT RATE

FATALITIES

We believe safety is the responsibility of each and every team member, and it is our practice to embed safety into our everyday operations and throughout all levels of our organization. Moda's culture of safety begins with a leadership and governance structure that sets the tone for discipline, accountability and continuous improvement. Through our Health, Safety, Security, and Environmental ("HSSE") Program, we advance our commitment to safety by ensuring alignment of job responsibilities, training plans and documented procedures with risk management activities. Through our management team, departmental leadership and a structured HSSE Program establish the tone-at-the-top that underlies our safety culture, the fundamental strength of our safety-first mindset is advanced by the daily commitment of our employees.

We further influence and reinforce sound safety behaviors by developing our employees' knowledge, skills and awareness of safety related issues through specific training opportunities, leading to enhanced and improved safety performance. **Each employee has stop-work authority and is empowered to speak up and stop unsafe practices.**

At VMH, we are committed to continuously improving safety and finding ways to better protect our team. The Moda team meets monthly with VMH management to discuss health, safety and environmental updates and performance. During each meeting, the team reviews both lagging and leading indicators of HSSE performance on areas including process and operational safety, personal safety, security, environmental releases or reportable events, product quality and safety training. Moda then reports the performance and updates to the Board on a quarterly basis.



INTRODUCTION

OUR COMPANY

OUR SUSTAINABILITY
STRATEGY

GOVERNANCE

ENVIRONMENTAL

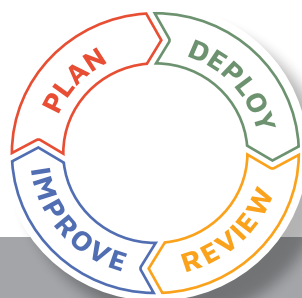
SOCIAL

ABOUT THIS
REPORT

FORWARD-LOOKING
STATEMENTS

SASB INDEX

Our Safety Management Program



PLAN

- Identifying HSSE Aspects, Impacts & Risks
- Legal, Business and Customer Requirements
- Goals & Plan
- Management of Change

DEPLOY

- Structure & Responsibility Training, Awareness & Competence
- Communication
- Document Control
- Operational Control
- Emergency Planning & Response

REVIEW

- Performance Monitoring & Measuring
- Nonconformance, Corrective & Preventative Action
- Records
- HSSE Management Systems
- Audits

IMPROVE

- Management Review
- Training
- Industry Collaboration



INTRODUCTION

OUR COMPANY

OUR SUSTAINABILITY STRATEGY

GOVERNANCE

ENVIRONMENTAL

SOCIAL

ABOUT THIS REPORT

FORWARD-LOOKING STATEMENTS

SASB INDEX

An example of our commitment to health and safety and our resilience in the face of change was our ability to adapt to the challenges imposed by the spread of COVID-19 without interrupting service to our valued customers. As a result of our response to the pandemic, we implemented practices and protocols to reduce the risk of spread as well as ways to support our workforce as they dealt with personal pandemic-related challenges. We empowered our employees to make the right decisions for their teammates and families by offering flexible solutions designed with each team member in mind, including flexible work schedules and remote work.

We take pride in the resilience our organization demonstrated during the last two years and in the contribution all our team members made in maintaining a safe, healthy workspace. Despite the challenges, Moda continued to provide best-in-class service to our customers without interruption and we did so without having to cut pay, layoff, furlough or reduce employee working hours.

IN 2021
MODA RECEIVED
THE SAFETY EXCELLENCE AWARD
FROM THE INTERNATIONAL LIQUIDS
TERMINAL ASSOCIATION ("ILTA")



This annual award recognizes terminal operating member companies for outstanding safety performance. Companies who receive the Safety Excellence Award achieved a total recordable incident rate per 100 employees of 0.75 or less during 2020. Moreover, in 2021, Moda did not have any lost time injuries or any injuries requiring medical attention.

Employee Engagement, Diversity & Inclusion

At Moda, our people are our most valuable asset, as they drive our collective success. We strive to be their employer of choice by creating a positive, open and inclusive work environment that allows our employees to grow as we grow. Our employees come to work every day with the goal of providing best-in-class service to our customers, so it is important that we ensure each employee feels welcomed and engaged, and that their talents are utilized to the best of their abilities.



Collaborate & put others first

Employee Engagement

We are committed to connecting, empowering and supporting our team members to enhance their employee experience and the communities in which we live and work, enabling our team to provide best-in-class service to our customers. We want all our employees to be engaged in our business and know they are a valued part of the Moda family. We attract and retain high-talent professionals by fostering an inclusive and collaborative environment where everyone can flourish.

We provide a comprehensive employee benefits package, including resources to support mental health, through an Employee Assistance Program which provides counseling services. In addition to competitive compensation and benefits, we provide our employees with ongoing training and skill-building activities as well as opportunities for personal and professional development and career advancement.



Inspire trust, enthusiasm, optimism & fun



INTRODUCTION

OUR COMPANY

OUR SUSTAINABILITY STRATEGY

GOVERNANCE

ENVIRONMENTAL

SOCIAL

ABOUT THIS REPORT

FORWARD-LOOKING STATEMENTS

SASB INDEX



Spotlight: Moda Greenfield Marine Terminal Commissioning Ceremony

In 2021, Vopak Moda Houston, LLC successfully commissioned its fully operational greenfield marine terminal in the Port of Houston, allowing for a commissioning ceremony. The ceremony included attendance from community organizations such as the U.S. Coast Guard, Port of Houston, Houston Pilots, City of Deer Park, neighboring facilities, existing and potential customers, and VMH employees and representatives from Moda and Vopak. The ceremony recognized the team's efforts to successfully commission the facility in spite of headwinds presented by the pandemic and encouraged further development of employee, customer and community relationships.

Spotlight: Collaboration Lunches

One important way we seek to strengthen employee relationships and keep an open line of communication within our organization is by encouraging all team members, including management, to take a break from their work and get to know each other over a meal. Twice a month, we provide lunch to employees at our corporate headquarters.

We originally began this tradition to show appreciation for employee efforts. However, over time, these gatherings have come to provide a unique opportunity for Moda team members from all levels and all departments to celebrate accomplishments, voice concerns, offer feedback, brainstorm solutions and answer questions on a variety of topics that ultimately enhance our employee experience, while improving our business.



Training & Development

Moda is committed to providing meaningful careers for our team members by helping them develop the skills needed to excel at their job, and in turn provide excellent customer service and create value for our stakeholders. We ensure the success of our employees and our business by providing ongoing training and skill building opportunities. Currently, we design individualized, role-based training plans for our employees focused on each person's developmental needs and consider the overall skills of those within the organization.

AT VMH, WE PROVIDED AN AVERAGE OF

40 **TRAINING HOURS
PER OPERATOR
IN 2021**

Training topics included fire safety, emergency response, hazard waste operations and management, incident command and medical training. While a substantial portion of our training efforts focus on safety, emergency response and preparedness, we recognize the pace of change in our industry is accelerating and we are proactive in identifying opportunities for our team members to strengthen skill sets through a variety of continuing education options, including our tuition reimbursement programs for employees seeking additional education or certification. We also encourage our employees to further their knowledge through participation in professional and industry advisory groups that, among other benefits, provide educational programs to their members.

INTRODUCTION

OUR COMPANY

OUR SUSTAINABILITY
STRATEGY

GOVERNANCE

ENVIRONMENTAL

SOCIAL

ABOUT THIS
REPORT

FORWARD-LOOKING
STATEMENTS

SASB INDEX

Employee Recognition

The celebration of individual achievements and contributions is an important part of our culture. We value hard work and commitment to excellence and give recognition for a job well done. We encourage our managers to identify and nominate employees who exemplify our values. These employees receive additional compensation as part of their broad-based compensation package.

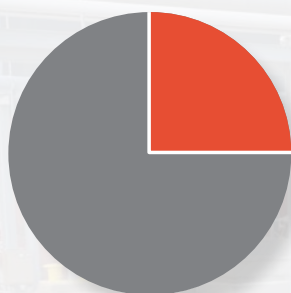




Diversity & Inclusion

We are committed to fostering a diverse and inclusive company culture that blends the unique abilities and talents of our team members to support our customers, communities and other stakeholders. As we continue to grow, we actively seek to attract and retain a workforce with the unique identities, experiences, backgrounds and perspectives reflecting the communities we serve.

In 2021, to support our working parents, Moda updated our **parental leave policy to provide mothers up to 12 weeks of paid leave and non-birthing parents up to 4 weeks of paid leave.**



GENDER DIVERSITY

● Male	75%
● Female	25%

INTRODUCTION

OUR COMPANY

OUR SUSTAINABILITY
STRATEGY

GOVERNANCE

ENVIRONMENTAL

SOCIAL

ABOUT THIS
REPORT

FORWARD-LOOKING
STATEMENTS

SASB INDEX

Community Engagement



At Moda, we pride ourselves on being responsible corporate citizens and good neighbors. We recognize that in order to make a lasting impact in the areas where our customers, employees and other stakeholders live and work, we must take care of the people and communities around us. Our goal has always been to establish our organization as a trusted local partner. We are committed to building a stronger, safer community and promoting healthy and safe practices that increase our quality of life. We seek to understand the communities in which we operate, listen to local concerns and identify opportunities to add value and provide support. We proactively engage with local leaders and listen to residents' feedback. Through open and honest communication, we aim to inform the community about our culture and operations so they know who we are and what they can expect from our presence and activities.

Spotlight: A Commitment to Our Communities

In 2021, Moda redesigned our stakeholder engagement framework to better align our efforts within the communities in which we operate. At our legacy Ingleside facility, we conducted a community perception survey, Social Impact Assessment ("SIA"), instituted a community e-mail and phone number and established a robust process for tracking and responding to community feedback. The insights we gained helped shape our investments and improved awareness and confidence amongst the communities in which we operated.

INTRODUCTION

OUR COMPANY

OUR SUSTAINABILITY
STRATEGY

GOVERNANCE

ENVIRONMENTAL

SOCIAL

ABOUT THIS
REPORT

FORWARD-LOOKING
STATEMENTS

SASB INDEX



Moda & Our Neighbors

We have a civic responsibility to support our communities. Through our involvement in various industry organizations, economic associations and local chambers of commerce, we foster positive long-lasting improvements which strengthen our community, attract a skilled workforce and lead to economic growth. Our involvement also reinforces our reputation as a safety- and community-minded business leader.

IN 2021, MODA WAS RECOGNIZED
BY THE CITY OF INGLESIDE FOR ITS
“**EXEMPLARY INDUSTRIAL PARTNERSHIP**”
AND AWARDED “**KEYS TO THE CITY**”.



Moda participates in a number of economic and community development organizations and partnerships with members of industry, governmental bodies and other stakeholders. **These memberships provide us an opportunity to provide input and economic development for the future of our community and allow us to engage with business leaders through a variety of social and educational programs.**

**PORT OF HOUSTON | HOUSTON PILOTS | GREATER HOUSTON PORT BUREAU
COASTAL PLAIN LEPC | EHCMA | DPCAC**



INTRODUCTION

OUR COMPANY

OUR SUSTAINABILITY
STRATEGY

GOVERNANCE

ENVIRONMENTAL

SOCIAL

ABOUT THIS
REPORT

FORWARD-LOOKING
STATEMENTS

SASB INDEX



Moda & Our Communities



Supporting the community is part of our culture and business strategy. We have a strong history of working side-by-side with local leaders and nonprofit organizations and providing financial and in-kind support to programs that make positive impacts in the communities where we live and operate. Each year, we prepare a community engagement plan to set priorities and ensure that our efforts have a meaningful impact.

In 2021, we enhanced our communication engagement plan and developed an SIA. The goal of the SIA was to create a more robust understanding of how our legacy operations in Ingleside impacted the surrounding communities. Based on our findings, we elected to focus our giving in four key areas: (1) children, youth and family; (2) public safety, health and environment; (3) education and skilled labor; and (4) military and veterans. The development of this model at Ingleside may be replicated for future asset developments and locations. **Within our framework, two areas of focus for the coming year are food security and water quality/wetlands preservation.**

Our community involvement extends beyond financial support. We encourage our employees to participate on behalf of the company in the community events we sponsor and to volunteer for organizations they are passionate about.

INTRODUCTION

OUR COMPANY

OUR SUSTAINABILITY
STRATEGY

GOVERNANCE

ENVIRONMENTAL

SOCIAL

ABOUT THIS
REPORT

FORWARD-LOOKING
STATEMENTS

SASB INDEX

In 2021, Moda contributed
to the following organizations:

San Patricio County Economic Development	Ingleside Youth Football & Cheer League
NFPA National Fire Protection	Boy Scouts of America
Rockport-Fulton Baseball	Coastal Plains LEPC
Ingleside Chamber of Commerce	Portland Chamber of Commerce
Ingleside Independent School District	Houston Food Bank
Aransas Pass Chamber of Commerce	

WE MATCH
QUALIFIED **EMPLOYEE DONATIONS**
OF AMOUNTS UP TO **\$2,000** PER YEAR





ABOUT THIS REPORT

This report highlights key sustainability topics, our management approaches and performance metrics related to ESG aspects of our business. The information included in this report has been subjected to the company's policies surrounding the disclosure of financial and non-financial data. The information included in this report is as of and for the year ended December 31, 2021, unless otherwise noted. None of the data included in this report was subject to a third-party audit verification process.

FORWARD-LOOKING STATEMENTS

Certain information contained in this Sustainability Report may constitute forward-looking statements within the meaning of applicable securities laws, including, but not limited to, statements regarding the company's plans to: incorporate sustainability metrics into its overall strategy, make additional efforts to contribute to local communities, foster programs regarding diversity and inclusion and implement projects or initiatives to improve performance relative to environmental matters. Readers are cautioned not to place undue reliance on forward-looking statements as they are subject to a number of assumptions and known and unknown risks and uncertainties that may cause the actual results, performance or achievements of the company to be materially different from any future results, performance or achievements expressed or implied by such forward-looking statements. The forward-looking statements contained herein are made as of the date of this document. The company assumes no obligation to update or otherwise revise these forward-looking statements, whether as a result of new information, future events or otherwise.

INTRODUCTION

OUR COMPANY

OUR SUSTAINABILITY
STRATEGY

GOVERNANCE

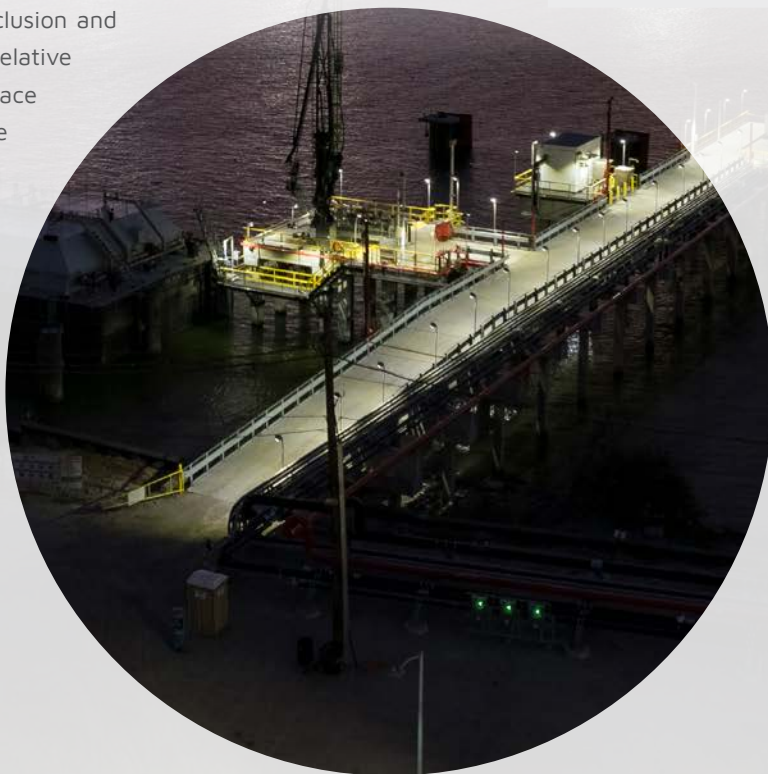
ENVIRONMENTAL

SOCIAL

**ABOUT THIS
REPORT**

**FORWARD-LOOKING
STATEMENTS**

SASB INDEX



SASB Index

Oil & Gas Midstream Standard



The SASB framework aims to provide a standard for companies to disclose financially-material and decision-useful ESG information to investors and other stakeholders. The index below maps our performance under each of the suggested disclosure topics for the Oil & Gas – Midstream sustainability accounting standard according to SASB’s Sustainable Industry Classification System (SICS®), as this industry most accurately reflects our business operations. Other topics disclosed throughout this report beyond the scope of this standard are not reflected in this index.

SASB CODE	ACCOUNTING METRIC	MEASURE	RESPONSE
GREENHOUSE GAS EMISSIONS			
EM-MD-110a.1	Total gross global Scope 1 emissions, percentage methane, percentage covered under emissions-limiting regulations	Metric tons CO ₂ e, Percentage (%)	Not disclosed
EM-MD-110a.2	Discussion of long-term and short-term strategy or plan to manage Scope 1 emissions, emissions reduction targets, and an analysis of performance against those targets	n/a	Page 21
AIR QUALITY			
EM-MD-120a.1	Air emissions of the following pollutants: (1) NO _x (excluding N ₂ O), (2) SO _x , (3) volatile organic compounds (VOCs), and (4) particulate matter (PM ₁₀)	Metric Tons	Not disclosed
ECOLOGICAL IMPACT			
EM-MD-160a.1	Description of environmental management policies and practices for active operations	n/a	Page 24
EM-MD-160a.2	Percentage of land owned, leased, and/or operated within areas of protected conservation status or endangered species habitat	Percentage (%) by acreage	0%
EM-MD-160a.3	Terrestrial acreage disturbed, percentage of impacted area restored	Acres (ac), Percentage (%)	141.3 acres Acres restored n/a
EM-MD-160a.4	Number and aggregate volume of hydrocarbon spills, volume in Artic, volume in Unusually Sensitive Areas (USAs), and volume recovered	Number, Barrels (bbls)	0 spills
COMPETITIVE BEHAVIOR			
EM-MD-520a.1	Total amount of monetary losses as a result of legal proceedings associated with federal pipeline and storage regulations	Reporting Currency	\$0
CRITICAL INCIDENT RISK			
EM-MD-540a.1	Number of reportable pipeline incidents, percentage significant	Number, Percentage (%)	0
EM-MD-540a.2	Percentage of (1) natural gas and (2) hazardous liquid pipelines inspected	Percentage (%)	(1) Not Applicable (2) 100%
EM-MD-540a.3	Number of (1) accident releases and (2) non-accident releases (NARs) from rail transportation	Number	0 releases
EM-MD-540a.4	Discussion of management systems used to integrate a culture of safety and emergency preparedness throughout the value chain and throughout project lifecycles	n/a	Page 26